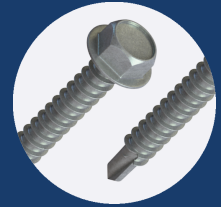


25.3

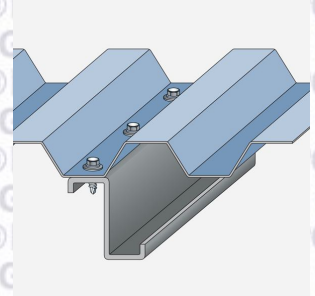
FOR FASTENING SHEET TO PURLINS OF 1.5MM-6MM THICKNESS



PROPERTIES

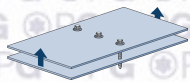


MATERIAL	CARBON STEEL
COATING	500 HRS (SILVER)
HEAD TYPE	HEX
DRILL POINT	3 PT
EFFECTIVE THREAD LENGTH	15.00
RECOMMENDED DRILL BIT/SOCKET	SOCKET-HEX-5/16" MAG
RECOMMENDED DRILL SPEED	1500 - 2500 RPM



PERFORMANCE

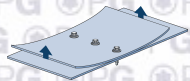
PULL OUT



STEEL THICKNESS (MM)	2.00	4.00	6.00	N/A	N/A
VALUE (kN)	3.96	9.96	11.50		

Grade of material: S275 Steel

PULL OVER



WASHER	16MM x 2MM		19MM x 2MM	
SHEET THICKNESS (MM)	0.50	0.70	0.50	0.70
VALUE (kN)				

SHEAR



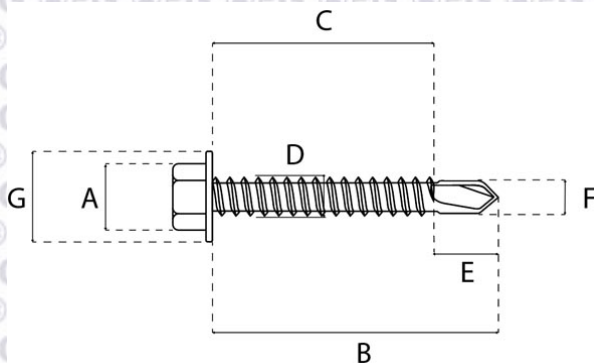
VALUE (kN)	9.10
------------	------

TENSILE



VALUE (kN)	17.50
------------	-------

DIMENSIONS



A (MM)	8.64
B (MM)	25.00
C (MM)	17.00
D (MM)	6.30
E (MM)	8.00
F (MM)	5.70
G (MM)	12.25