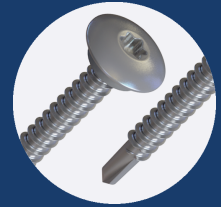


# 26.3SSLPW

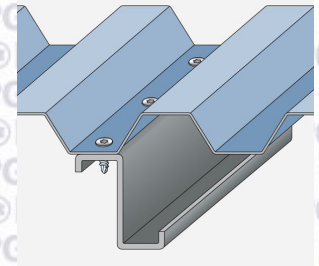
FOR FASTENING SHEET TO PURLINS OF 1.5MM-6MM THICKNESS



## PROPERTIES



MATERIAL	STAINLESS STEEL A2 - 304 GRADE
COATING	BRIGHT ZINC PLATING
HEAD TYPE	LOW PROFILE
DRILL POINT	3 PT
EFFECTIVE THREAD LENGTH	15.00
RECOMMENDED DRILL BIT/SOCKET	BIT-T25
RECOMMENDED DRILL SPEED	1500 - 2500 RPM



## PERFORMANCE

### PULL OUT



STEEL THICKNESS (MM)	2.00	4.00	6.00	N/A	N/A
VALUE (kN)	4.44	8.50	8.50		

Grade of material: S275 Steel

### PULL OVER



WASHER	16MM x 2MM		19MM x 2MM	
SHEET THICKNESS (MM)	0.50	0.70	0.50	0.70
VALUE (kN)				

### SHEAR



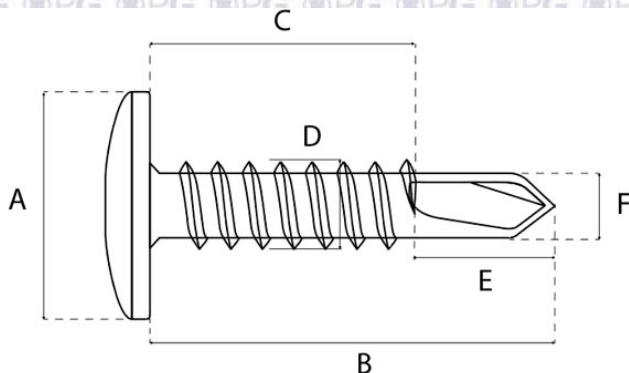
VALUE (kN)	6.79
------------	------

### TENSILE



VALUE (kN)	8.50
------------	------

## DIMENSIONS



A (MM)	14.50
B (MM)	26.00
C (MM)	18.00
D (MM)	5.50
E (MM)	8.00
F (MM)	4.70
G (MM)	N/A