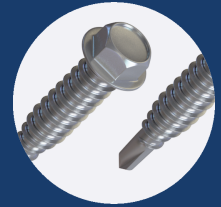
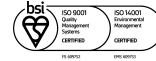


28.1SS

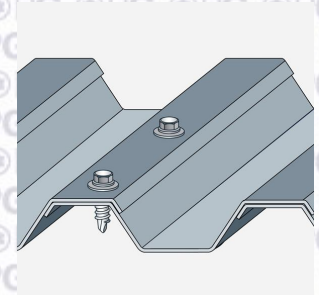
FOR STITCHING MAX 2 X 1.25MM SHEETS



PROPERTIES



MATERIAL	STAINLESS STEEL A2 - 304 GRADE
COATING	500 HRS (SILVER)
HEAD TYPE	HEX
DRILL POINT	1 PT
EFFECTIVE THREAD LENGTH	20.00
RECOMMENDED DRILL BIT/SOCKET	SOCKET-HEX-5/16"RING
RECOMMENDED DRILL SPEED	1500 - 2500 RPM



PERFORMANCE

PULL OUT



STEEL THICKNESS (MM)	2 x 0.70	N/A	N/A	N/A	N/A
VALUE (kN)	3.22				

Grade of material: Plastisol Sheet

PULL OVER



WASHER	16MM x 2MM		19MM x 2MM	
SHEET THICKNESS (MM)	0.50	0.70	0.50	0.70
VALUE (kN)				

SHEAR



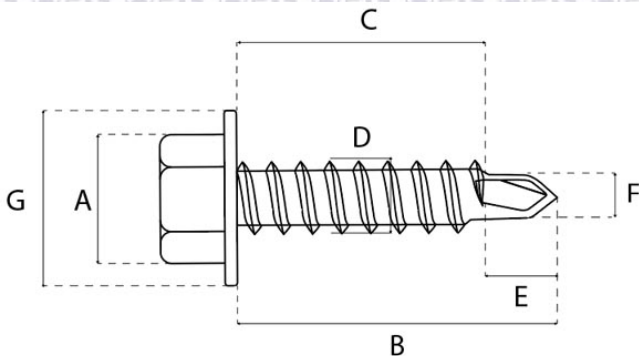
VALUE (kN)	8.50
------------	------

TENSILE



VALUE (kN)	7.51
------------	------

DIMENSIONS



A (MM)	8.71
B (MM)	28.00
C (MM)	22.50
D (MM)	6.30
E (MM)	5.50
F (MM)	4.00
G (MM)	12.60