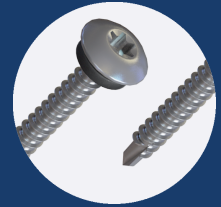


# 35.1SSLP12S

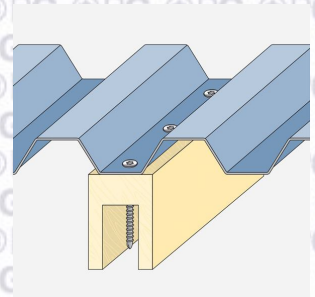
FOR FASTENING MAX 2 X 0.75MM SHEETS TO TIMBER



## PROPERTIES

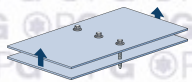


MATERIAL	STAINLESS STEEL A2 - 304 GRADE
COATING	BRIGHT ZINC PLATING
HEAD TYPE	LOW PROFILE
DRILL POINT	1 PT
EFFECTIVE THREAD LENGTH	29.00
RECOMMENDED DRILL BIT/SOCKET	BIT-T25
RECOMMENDED DRILL SPEED	1500 - 2500 RPM



## PERFORMANCE

### PULL OUT



STEEL THICKNESS (MM)	15mm timber	25mm timber	35mm timber	N/A	N/A
VALUE (kN)	0.74	1.74	2.00		

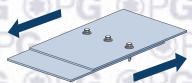
Grade of material: C16 Timber

### PULL OVER



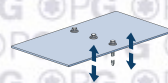
WASHER	16MM x 2MM		19MM x 2MM	
SHEET THICKNESS (MM)	0.50	0.70	0.50	0.70
VALUE (kN)				

### SHEAR



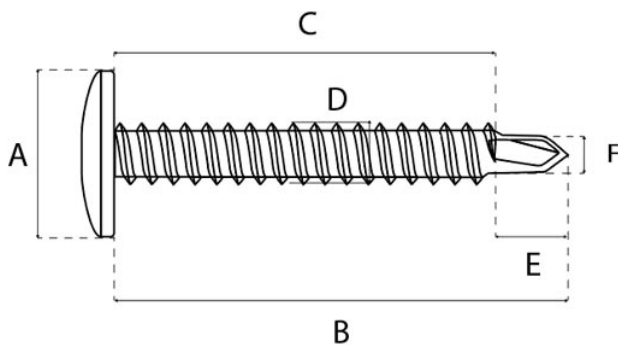
VALUE (kN)	4.84
------------	------

### TENSILE



VALUE (kN)	3.68
------------	------

## DIMENSIONS



A (MM)	12.00
B (MM)	35.00
C (MM)	31.00
D (MM)	4.80
E (MM)	4.00
F (MM)	3.00
G (MM)	N/A