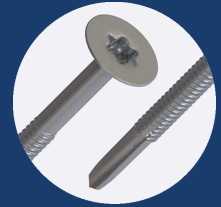


40.5SSC

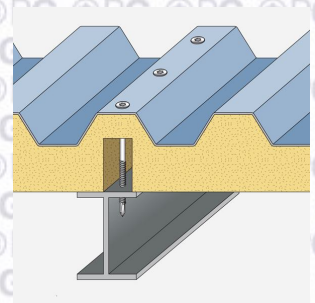


FOR FASTENING COMPOSITE PANELS (MAX 30MM THICKNESS)
TO PURLINS OF 4MM-12.5MM THICKNESS

PROPERTIES

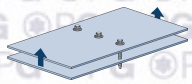


MATERIAL	STAINLESS STEEL A2 - 304 GRADE
COATING	500 HRS (SILVER)
HEAD TYPE	COUNTERSUNK
DRILL POINT	5 PT
EFFECTIVE THREAD LENGTH	19.00
RECOMMENDED DRILL BIT/SOCKET	BIT-T25
RECOMMENDED DRILL SPEED	1500 - 2500 RPM



PERFORMANCE

PULL OUT



STEEL THICKNESS (MM)	4.00	6.00	8.00	10.00	12.00
VALUE (kN)	8.90	9.50	9.50	9.50	9.50

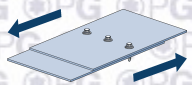
Grade of material: S275 Steel

PULL OVER



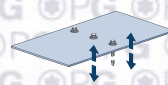
WASHER	16MM x 2MM		19MM x 2MM	
SHEET THICKNESS (MM)	0.50	0.70	0.50	0.70
VALUE (kN)				

SHEAR



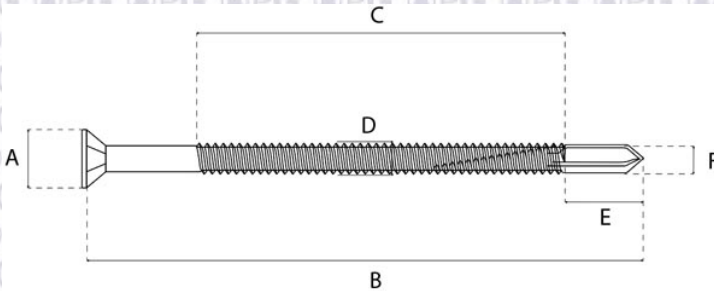
VALUE (kN)	8.77
------------	------

TENSILE



VALUE (kN)	11.49
------------	-------

DIMENSIONS



A (MM)	9.90
B (MM)	40.00
C (MM)	25.00
D (MM)	5.50
E (MM)	15.00
F (MM)	5.00
G (MM)	N/A