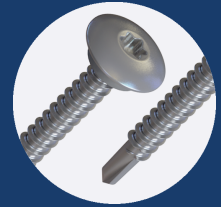


# 50.2SSLPW

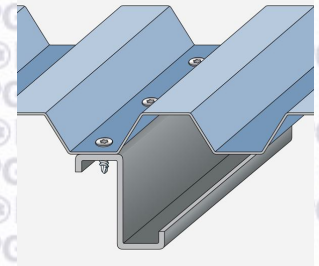
FOR FASTENING SHEET TO PURLINS OF 1.2MM-3.5MM THICKNESS



## PROPERTIES



MATERIAL	STAINLESS STEEL A2 - 304 GRADE
COATING	BRIGHT ZINC PLATING
HEAD TYPE	LOW PROFILE
DRILL POINT	2 PT
EFFECTIVE THREAD LENGTH	41.00
RECOMMENDED DRILL BIT/SOCKET	BIT-T25
RECOMMENDED DRILL SPEED	1500 - 2500 RPM



## PERFORMANCE

### PULL OUT



STEEL THICKNESS (MM)	1.20	1.60	2.00	2.50	3.00
VALUE (kN)	2.48	3.80	4.74	6.60	6.96

Grade of material: S450 Steel

### PULL OVER



WASHER	16MM x 2MM		19MM x 2MM	
SHEET THICKNESS (MM)	0.50	0.70	0.50	0.70
VALUE (kN)				

### SHEAR



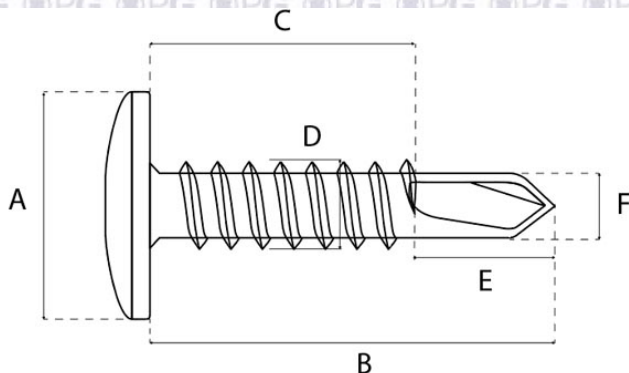
VALUE (kN)	6.50
------------	------

### TENSILE



VALUE (kN)	8.14
------------	------

## DIMENSIONS



A (MM)	14.50
B (MM)	50.00
C (MM)	44.10
D (MM)	5.50
E (MM)	5.90
F (MM)	4.60
G (MM)	N/A